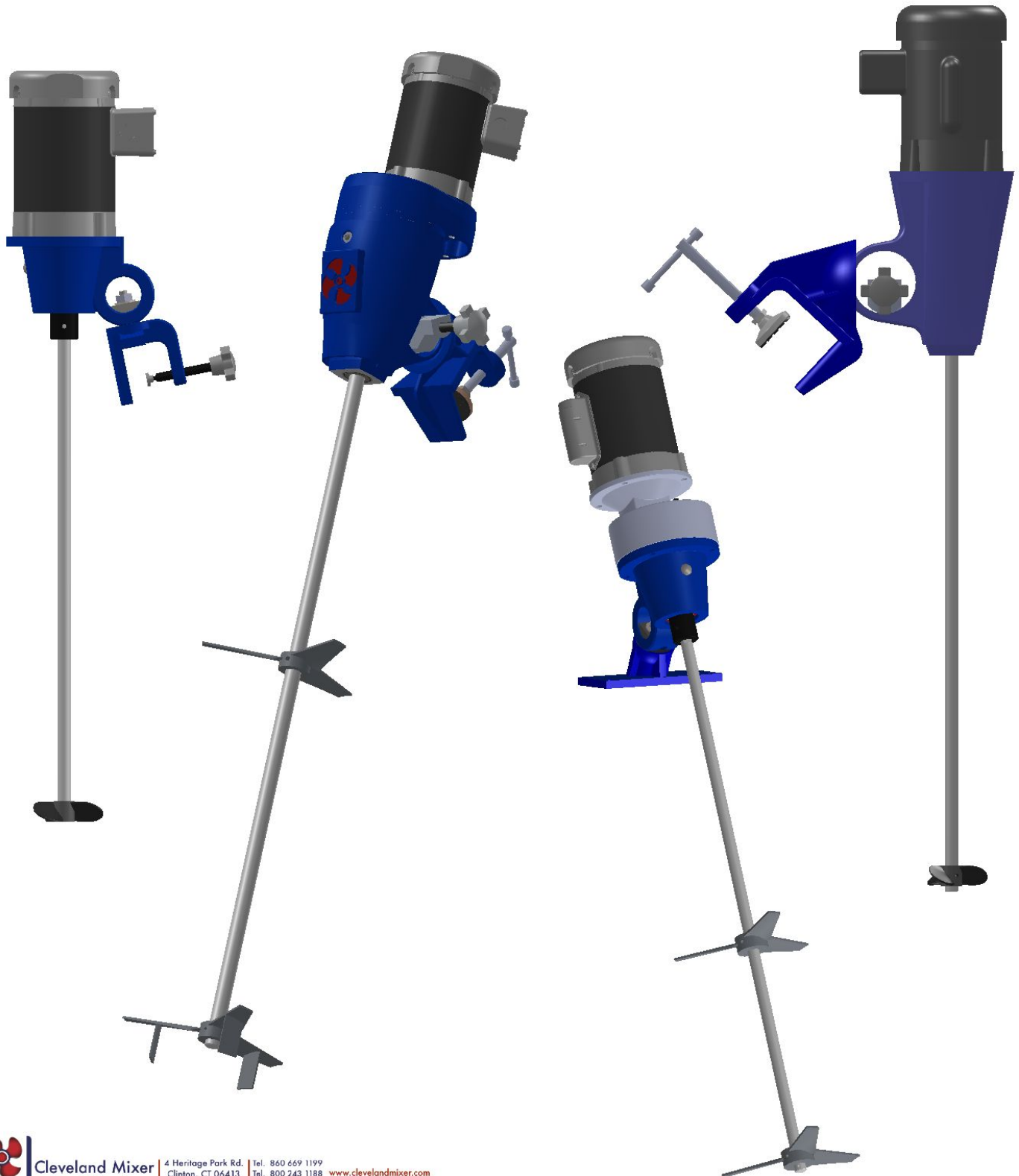


CLEVELAND MIXER

OPERATION & MAINTENANCE INSTRUCTIONS for RH & RG, PORTABLE CLAMP/SWIVEL MOUNT MIXER SERIES CD & CG, PORTABLE CLAMP/SWIVEL MOUNT MIXER SERIES

ELECTRIC/AIR POWERED, GEAR DRIVEN MODELS: RG, RAG, CG, CAG

ELECTRIC/AIR POWERED, DIRECT DRIVE MODELS: RH, RAH, CD, CA



Cleveland Mixer
A Brand of Subiaco, Inc.

4 Heritage Park Rd. Tel. 860 669 1199
Clinton, CT 06413 Tel. 800 243 1188 www.clevelandmixer.com
USA Fax 860 669 7461

CONTENTS

Receiving & Unpacking	Page - 01
Fasteners/Torque Chart	Page - 02
Shaft Connections	Page - 03
Air Motor Info	Page - 04
Electrical Motor Info	Page - 04
Electrical Wire Diagram	Page - 05
AC & DC VFD Info	Page - 05
Needle Valves	Page - 06
Reducer Lubrication (RG/CG)	Page - 06
Propellers & Impellers	Page - 06 & 07
Propeller & Impeller part numbers	Page - 07
RH/RG Clamp Dims	Page - 08
CD/CG Clamp Dims	Page - 09
Mounting & Orientation	Page - 10
Trouble Shooting	Page - 11
CD Parts / Exploded View	Page - 12
RH Parts / Exploded View	Page - 13
RG Parts / Exploded View	Page - 14
CG Parts / Exploded View	Page - 15



Cleveland Mixer
A Brand of Subiaco, Inc.

4 Heritage Park Rd. | Tel. 860 669 1199
Clinton, CT 06413 | Tel. 800 243 1188 www.clevelandmixer.com
USA | Fax 860 669 7461

RECEIVING AND UNPACKING YOUR MIXER

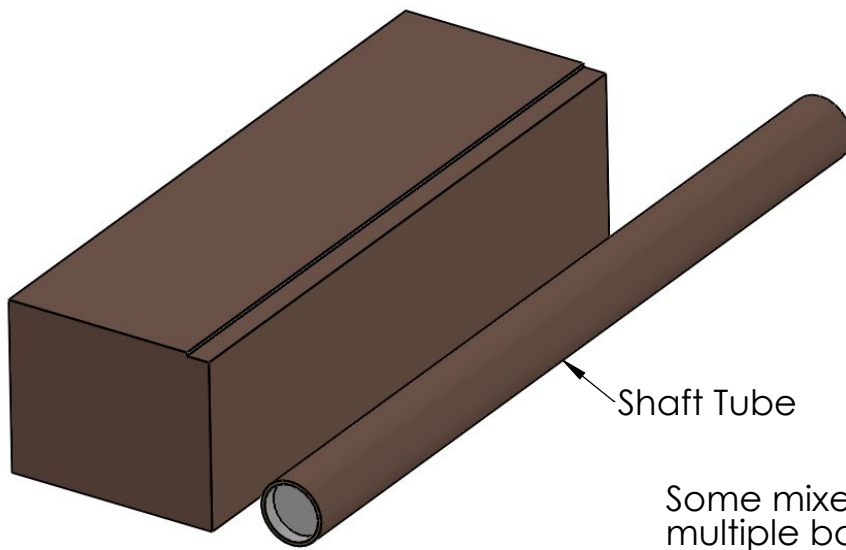
Congratulations on the purchase of your new Cleveland Mixer! If installed and operated properly, your new Cleveland Mixer will provide many years of worry-free service. Please follow the instructions provided in this manual for assembling, mounting and operating your mixer. If you have questions that are not addressed in this manual, please call Cleveland Mixer technical support toll free number: 1-800-243-1188 or find us on the web at www.clevelandmixer.com

Be sure to use care when uncrating, unpacking, lifting and handling your mixer. Certain parts such as impeller blades, hubs, couplings, steady bearings, seals, keys, hardware and other mixer accessories may be packed in boxes inside of crates or bolted down to skids. Do not discard any packing crates or materials until you've accounted for all the parts of your mixer assembly.

Make sure to check the packing slip for your shipment to make sure you've received the correct number of skids, crates and cartons. If any of the shipment was not delivered or delivered with visible damage, please contact the carrier to report the missing pieces or damage. Once you've contacted the carrier, please contact Cleveland Mixer so we can document the issue.

The drive end of the mixer might be top heavy. Never lift the drive end of the mixer by the motor. Make sure when lifting shafting to keep the ends level so not to bend the shafting. After uncrating the mixer and parts, stage them on a level surface preferably indoors or in a clean dry location. Check your unpacked mixer assembly parts against your packing slip and assembly drawing to make sure everything is accounted for before assembling your mixer.

Cleveland Mixer ships most portable mixers with the mixer drive, propellers, impellers, hardware and VFD's foamed into cardboard boxes. The shafts are typically shipped inside of a cardboard tube. Small components like hardware, needle valves and breather plugs will be sealed in plastic bags. An owners manual will be supplied with the mixer inside of the box.



Some mixers are shipped in multiple boxes. Sometimes there are several parts in one box



Cleveland Mixer
A Brand of Subiaco, Inc.

4 Heritage Park Rd. | Tel. 860 669 1199
Clinton, CT 06413 | Tel. 800 243 1188 www.clevelandmixer.com
USA | Fax 860 669 7461

FASTENERS

- Tighten all fasteners to the values shown unless specifically instructed to do otherwise.
- Lubricate all fasteners at assembly with grease, oil or anti-seize material
- If fasteners cannot be lubricated, use dry torque spec provided on chart.
- Loose hardware can cause catastrophic damage. It is very important to check all fasteners at scheduled maintenance intervals.
- If your process is corrosive or sanitary check the wetted hardware to make sure it is the correct grade before assembly.
- Always use washers and lock washers if they were provided.

USA Standard	GRADE 5		GRADE 8		316 STAINLESS STEEL	
	FT LB DRY	FT LB LUBED	FT LB DRY	FT LB LUBED	FT LB DRY	FT LB LUBED
1/4-20	8	6.3	12	9	6	5
5/16-18	17	13	24	18	11	10
3/8-16	30	23	45	35	20	17
7/16-14	50	35	70	50	33	28
1/2-13	75	55	110	80	45	38
9/16-12	110	80	150	110	59	50
5/8-11	150	110	210	160	96	82
3/4-10	260	200	380	280	131	111
7/8-9	430	320	600	450	202	172
1-8	640	480	910	680	299	254

Calculated tightening torques are based on conventional 60°F, clean and dry or lubricated (as indicated above) thread. Standard fasteners will be supplied with a split lock washer. Cleveland Mixer recommends a minimum of grade 5 (ASTM A449) for all hardware to 1-8 and grade SAE 8 for larger sizes.

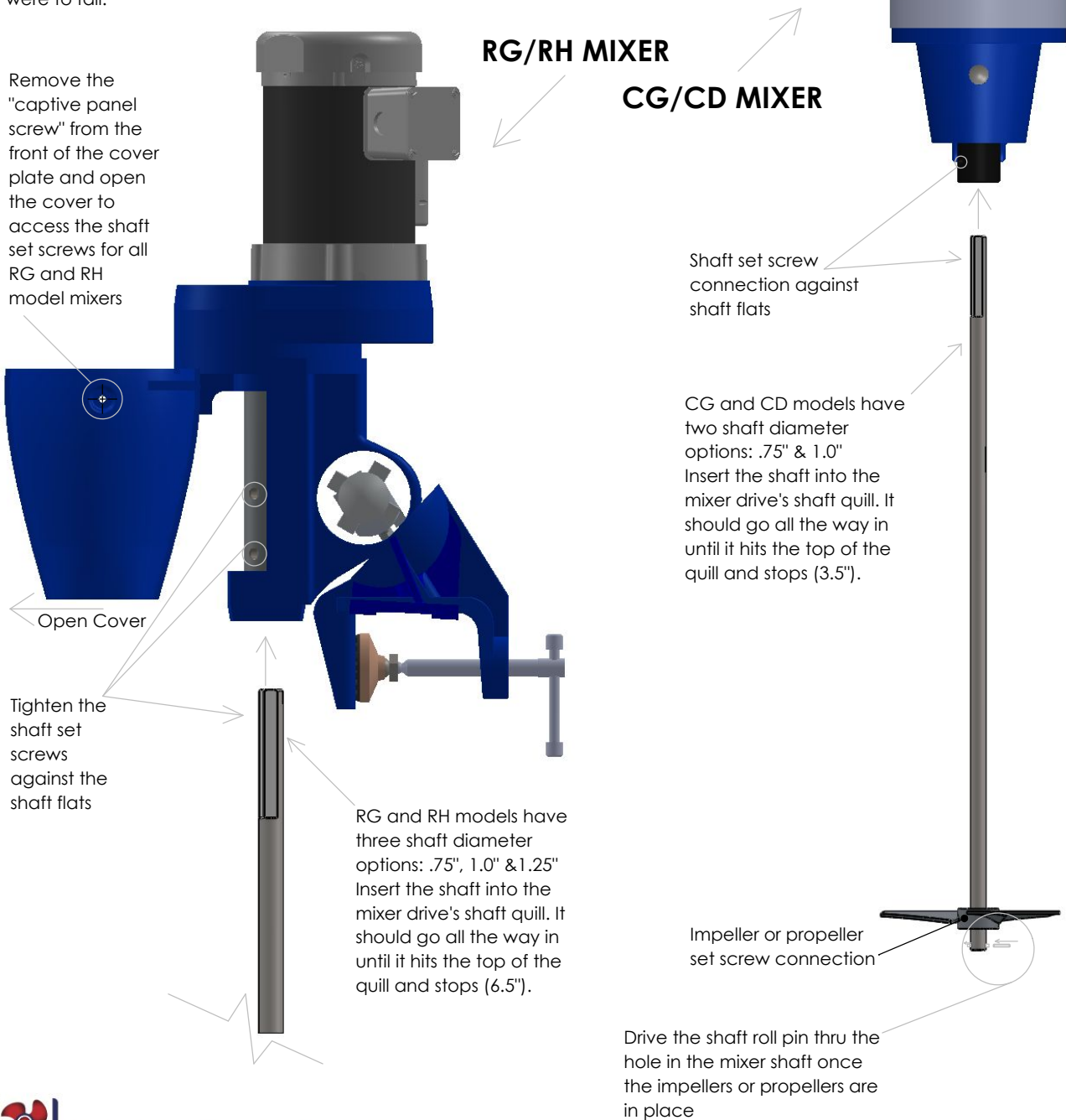


SHAFT CONNECTIONS

Cleveland Mixer portable clamp mounted or cup plate mounted mixer shafts and impellers (or propellers) fasten together with set screws (standard). RG and RH model shafts have angled flats at the top of the shaft and four 3/8-24x1/2", zinc, cup point set screws should seat against the shaft flats (two per) to drive the shaft without spinning and damaging the shaft. RG and RH models have a cover plate that needs to be opened to access the shaft connection set screws.

CG and CD model shafts have angled flats at the top of the shaft and two 1/4-28x3/8", zinc, cup point set screws should seat against the shaft flats (two per) to drive the shaft without spinning and damaging the shaft.

Impellers and propellers typically have two stainless steel, cup point set screws (size varies by impeller diameter) that will fasten directly to the mixer shaft. Cleveland Mixer recommends using thread locking compound and a torque wrench (torque specs available on page 2) to secure these set screws. A oversized roll pin will be provided with your shaft, once the impellers are in place, drive this roll pin thru the shaft so that it sticks out on each end. This will prevent the impeller from falling off if the set screws were to fail.



Cleveland Mixer
A Brand of Subiaco, Inc.

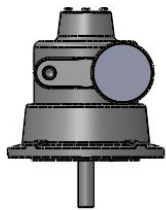
4 Heritage Park Rd. Tel. 860 669 1199
Clinton, CT 06413 Tel. 800 243 1188 www.clevelandmixer.com
USA Fax 860 669 7461

AIR AND ELECTRIC POWERED MOTORS

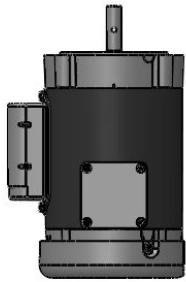
Cleveland Mixer's portable clamp on mixers are supplied with an electric power or air powered motor. Direct drive mixers (RH & CD) run directly off the speed of the motor. These mixer model motor's top speed will be the max RPM. Gear driven mixer's (RG & CG) are speed reduced by their gear drive. These models top speed will be 400 RPM for the RG and 350 RPM for the CG. All Cleveland Mixer portable mixers can be customized to suit your process with options such as explosion proof, wash down duty, hazardous duty, inverter duty or stainless steel motors, variable speed drives, needle valves, filter/lubricator and power cords with an on/off toggle switch; contact Cleveland Mixer for details.

Cleveland Mixers are shipped with a set of manufacturers instructions specific to each motor. Be sure to follow those instructions with regard to connection, operation and maintenance for the motor. Electrical motors should be wired by a professional.

The Maximum power parameters for common portable mixer models are listed below. These limits are calculated in material with viscosity and specific gravity of water (1/1). As CPS and SPG increase, the values listed below will change. Exceeding these parameters can result in overloading your mixer's motor.

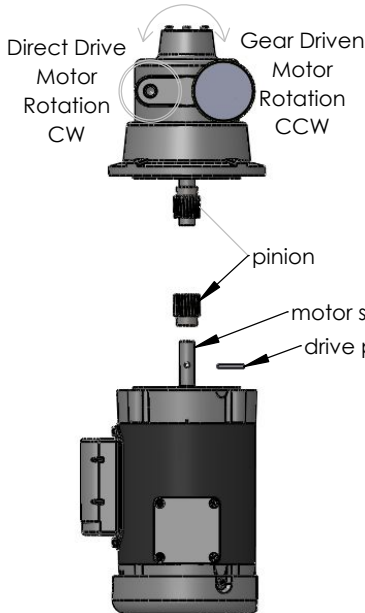


Air Motor



Electric Motor

Air Input Direction
(both direct and gear driven
will have CW propeller output)



Horse Power	Air Powered		Direct Drive 1800 RPM		Gear Driven 350-400 RPM	
	Air Pressure	CFM	Single Prop Diameter	Double Prop Diameter	Single Impeller	Double Impeller
.25	Direct 45 PSI Gear 45 PSI	Direct 25 Gear 25	4"	2 x 3.5"	10"	2 x 9"
.33	Direct 45 PSI Gear 45 PSI	Direct 25 Gear 25	4.5"	2 x 4"	11"	2 x 10"
.50	Direct 45 PSI Gear 45 PSI	Direct 25 Gear 25	5"	2 x 4.5"	12"	2 x 11"
.75	Direct 80 PSI Gear 80 PSI	Direct 20 Gear 20	6"	2 x 5"	13"	2 x 11"
1	Direct 90 PSI Gear 90 PSI	Direct 45 Gear 45	6"	2 x 5.5"	14"	2 x 12"
1.5	Direct 90 PSI Gear 90 PSI	Direct 65 Gear 65	6.5"	1 x 5 / 1 x 6"	15"	2 x 13"
2	Direct 90 PSI Gear 90 PSI	Direct 80 Gear 80	7"	2 x 6"	16"	2 x 14"

Direct drive mixer models (RH & CD) mixer shaft runs directly from the motor shaft. The motor shaft should be wired to rotate clockwise when looking down from the top. All Cleveland Mixer propellers and impellers are right hand direction (unless otherwise noted) designed to rotate clockwise in forward operation. Standard pumping action both direct and gear driven mixers will push fluid downward towards the bottom of the tank, creating an axial flow pattern.

Gear driven mixers should have their motors wired to run with the MOTOR SHAFT in reverse so that the OUTPUT MIXER SHAFT and impeller or propeller rotates clockwise when looking down from the top. Air motors for gear driven models should have the input airline inserted on right with the muffler on the left.

Direct drive mixer's are more suited for mixing smaller batches of lower viscosity materials. A good rule of thumb to follow when using a direct drive mixer is if your vessel is 750-1000 gallons or larger and/or the material you're mixing is 750-1000 CPS or greater, your application will require a gear driven mixer.

Even if you are mixing higher viscosity material in a smaller vessel, if the material is too thick it can put strain on your motor. If your motor is running hot or tripping breakers it is likely overloaded. It is a good practice to check the amperage draw on the motor during operation to make sure your motor is not running above it's nameplate load limit.

When running your mixer with a variable speed control, you should consult with Cleveland Mixer to make sure a lower shaft RPM is not putting your mixer in danger of running at or to close to first critical frequency. Running within 20% of first critical can result in excess shaft vibration that can damage your mixer.



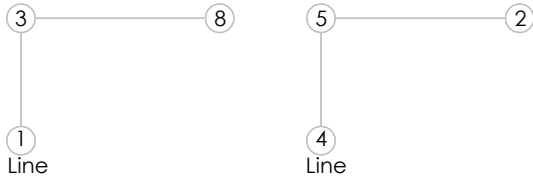
Cleveland Mixer
A Brand of Subiaco, Inc.

4 Heritage Park Rd. Tel. 860 669 1199
Clinton, CT 06413 Tel. 800 243 1188 www.clevelandmixer.com
USA Fax 860 669 7461

WIRE DIAGRAMS FOR STANDARD AC ELECTRICAL MOTORS

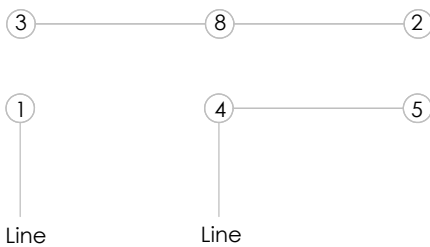
(refer to your mixer motor's manual to confirm)

Single Phase 115 Volt Input

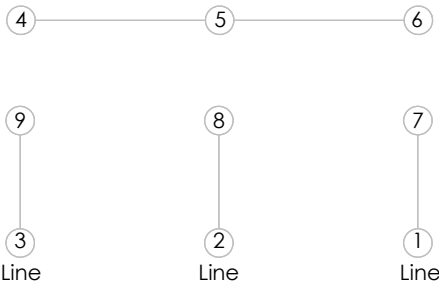


Reverse 5 & 8 to change direction

Single Phase 230 Volt Input

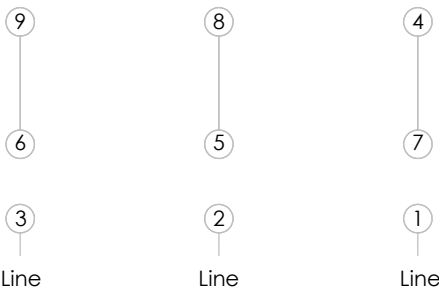


Three Phase 230 Volt Input



Interchange any two line leads to change direction

Three Phase 460 Volt Input



Interchange any two line leads to change direction

DC SPEED CONTROL

Cleveland Mixers with electric motors can be supplied with a variable speed control which allows the user to control the RPM of the mixer.

For smaller mixers with motor HP of 1/2HP or less, a 90 volt DC controller can be supplied to connect to a DC permanent magnet motor. This setup is most commonly supplied with direct drive models such as the CD-1, CD-2 & RH-1, RH-2. DC controls are not rated for use in hazardous or wet environments.

Contact Cleveland Mixer to discuss options or obtain a quote for a portable mixer with a DC controller.

AC SPEED CONTROL

Cleveland Mixers with electric motors can be supplied with a variable speed control which allows the user to control the RPM of their mixer. For portable mixers with motor horse power of .25-3HP an AC variable speed drive can be mounted directly to the motor or wall mounted and remotely wired to the motor to control the mixer's speed.

AC VFD's can be supplied with NEMA 1, NEMA 4 or NEMA 4X enclosure to suit the operating environment. The input voltage options for most AC drives as follows: 1/50 or 60/115, 1/50 or 60/230, 3/50 or 60/230, 3/50 or 60/460

With an AC VFD the mixer's motor must be 3/60/230/460 volt input. The VFD will take the input voltage and convert it to run the 3/60/230/460 motor. AC VFD's are not explosion proof rated. IN environments which require TEXP motors, the VFD should be remote mounted outside the hazardous area in a safe location.

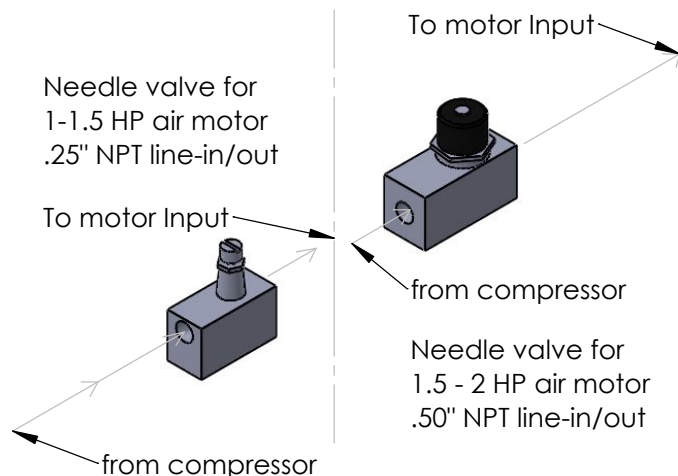


Cleveland Mixer
A Brand of Subiaco, Inc.

4 Heritage Park Rd. Tel. 860 669 1199
Clinton, CT 06413 Tel. 800 243 1188 www.clevelandmixer.com
USA Fax 860 669 7461

NEEDLE VALVES & FILTER LUBRICATORS

For mixers with air powered motors you can use a needle valve to control the flow of air pressure going into the motor. By opening and shutting the valve you will be able to control the speed of the mixer shaft. For mixers with air motors operating in dusty or high humidity environments, needle valves with filters and lubricators can be used to reduce moisture going into the motor from the compressor while also keeping the motor properly lubricated. Needle valves with filter/lubricators can help extend the life span of your air motor.



REDUCER LUBRICATION

Cleveland Mixer gear driven portable clamp mount mixers are shipped factory lubricated. The RG mixer's gear case is packed with 14oz of NLGI Grade 2, high temp bearing grease (standard). An equivalent grade of food grade or EP grease can be used for sanitary applications. The grease in an RG mixer should be changed only as needed which can vary based on service demands and conditions.

The CG mixer's gear drive is filled with 11oz of Klubersynth UH1-6-460. Gear driven CG mixers are also supplied with a breather plug which should be installed (prior to operation) at the highest point of the reducer, above the oil level, so that the gearbox can release pressure if it were to run hot. The oil should be changed once every three years or as needed with more intense service demands.

IMPELLERS & PROPELLERS

"Impeller" is a common term for a device that causes fluid movement proportional to its rotation speed and blade geometry. Impellers can vary by pitch, blade width to diameter ratio, blade thickness, number of blades and single or compound pitch. Impellers are most commonly fabricated from wrought material. Impellers can have a very wide variety in their dimensionless power numbers (N_p), their dimensionless flow number (N_q) and dimensionless thrust number (N_f). Impellers' diameters can range from 3.5" to 150" diameter (150" would go with another class of mixer). The number of blades can go from 2 to 6 (standard XTF-3, 3 blade supplied with most mixers).

Our use of the term "Propeller" is a specific design that has a defined number of blades (3), a defined blade thickness and defined pitch. In our usage of the word "propeller", there are two geometries or pitches used. The first is a 1:1 pitch or square pitch. The second is a 1.5:1 pitch that is called steep pitch. Propellers are always cast, never fabricated owing to their blade geometry. Propellers range from 3.5" to 20" diameter in our use. The application of propellers for industrial fluid processing is generally limited to smaller mixers (up to 5HP - portable mixers with shaft diameters of .5, .625, .75, 1, 1.25 & 1.50"

(continued on next page)



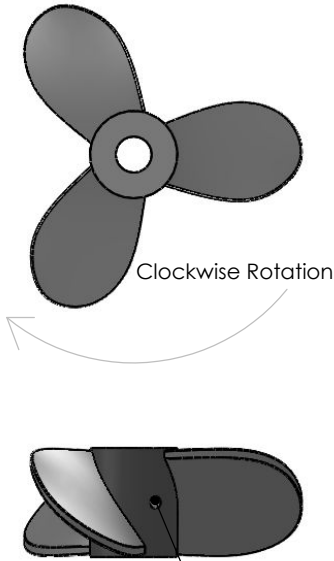
Cleveland Mixer
A Brand of Subiaco, Inc.

4 Heritage Park Rd. Tel. 860 669 1199
Clinton, CT 06413 Tel. 800 243 1188 www.clevelandmixer.com
USA Fax 860 669 7461

IMPELLERS & PROPELLERS

Cleveland Mixer portable clamp mount mixers come standard with either a stainless steel three blade hydrofoil impeller or a stainless steel three blade marine style square-pitch propeller. Typically direct drive mixers will be supplied with props while gear driven models are typically supplied with our XTF-3 hydrofoils. Although there are many additional diameter, style and bore size options, the most common sizes are listed below.

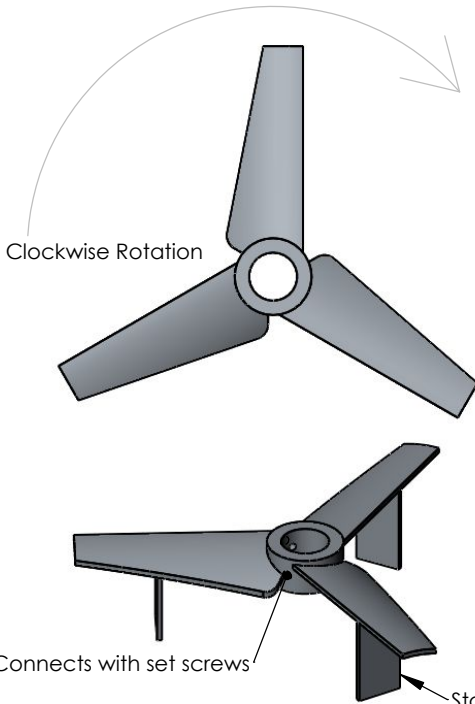
PROPELLERS 316SS



Dia.	Bore	Part Number	Dia.	Bore	Part Number
3"	.75"	313850-AAZ6	9"	1" 1.25"	313850-MMZ8 313850-MMZ10
3.5"	.75" 1"	313850-BBZ6 313850-BBZ8	10"	1" 1.25"	313850-NNZ8 313850-NNZ10
4"	.75" 1"	313850-CCZ6 313850-CCZ8	11"	1" 1.25"	313850-PPZ8 313850-PPZ10
4.5"	.75" 1"	313850-DDZ6 313850-DDZ8	12"	1" 1.25"	313850-QQZ8 313850-QQZ10
5"	.75" 1"	313850-EEZ6 313850-EEZ8	13"	1" 1.25"	313850-RRZ8 313850-RRZ10
6"	.75" 1"	313850-GGZ6 313850-GGZ8	14"	1" 1.25"	313850-SSZ8 313850-SSZ10
7"	.75" 1"	313850-JJZ6 313850-JJZ8	15"	1" 1.25"	313850-TTZ8 313850-TTZ10
8"	.75" 1"	313850-LLZ6 313850-LLZ8	16"	1" 1.25"	313850-UUZ8 313850-UUZ10

Connects to shaft with set screws (welded and polished props are also available)

XTF-3 HYDROFOIL 316SS



Dia	.75" Bore	1" Bore	1.25" Bore	1.5" Bore
9	609-101-09	609-102-09	609-103-09	609-104-09
10	609-101-10	609-102-10	609-103-10	609-104-10
11	609-101-11	609-102-11	609-103-11	609-104-11
12	609-101-12	609-102-12	609-103-12	609-104-12
13	609-101-13	609-102-13	609-103-13	609-104-13
14	609-101-14	609-102-14	609-103-14	609-104-14
15	609-101-15	609-102-15	609-103-15	609-104-15
16	609-101-16	609-102-16	609-103-16	609-104-16
17	609-101-17	609-102-17	609-103-17	609-104-17
18	609-101-18	609-102-18	609-103-18	609-104-18
19	609-101-19	609-102-19	609-103-19	609-104-19
20	609-101-20	609-102-20	609-103-20	609-104-20
w/fins	609-210-	609-211-	609-212-	609-213-

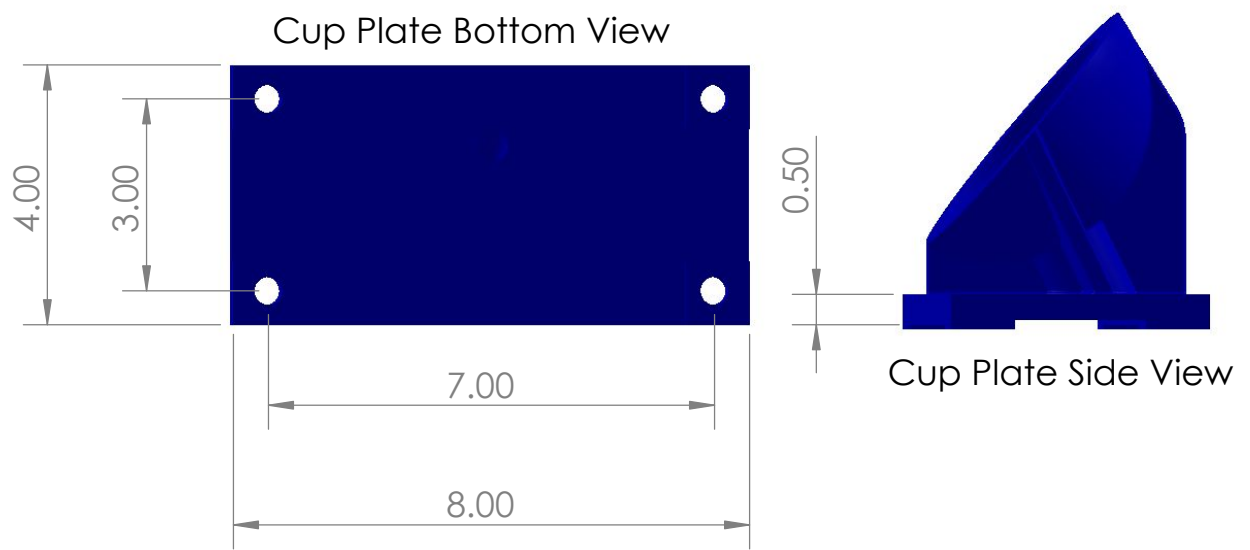
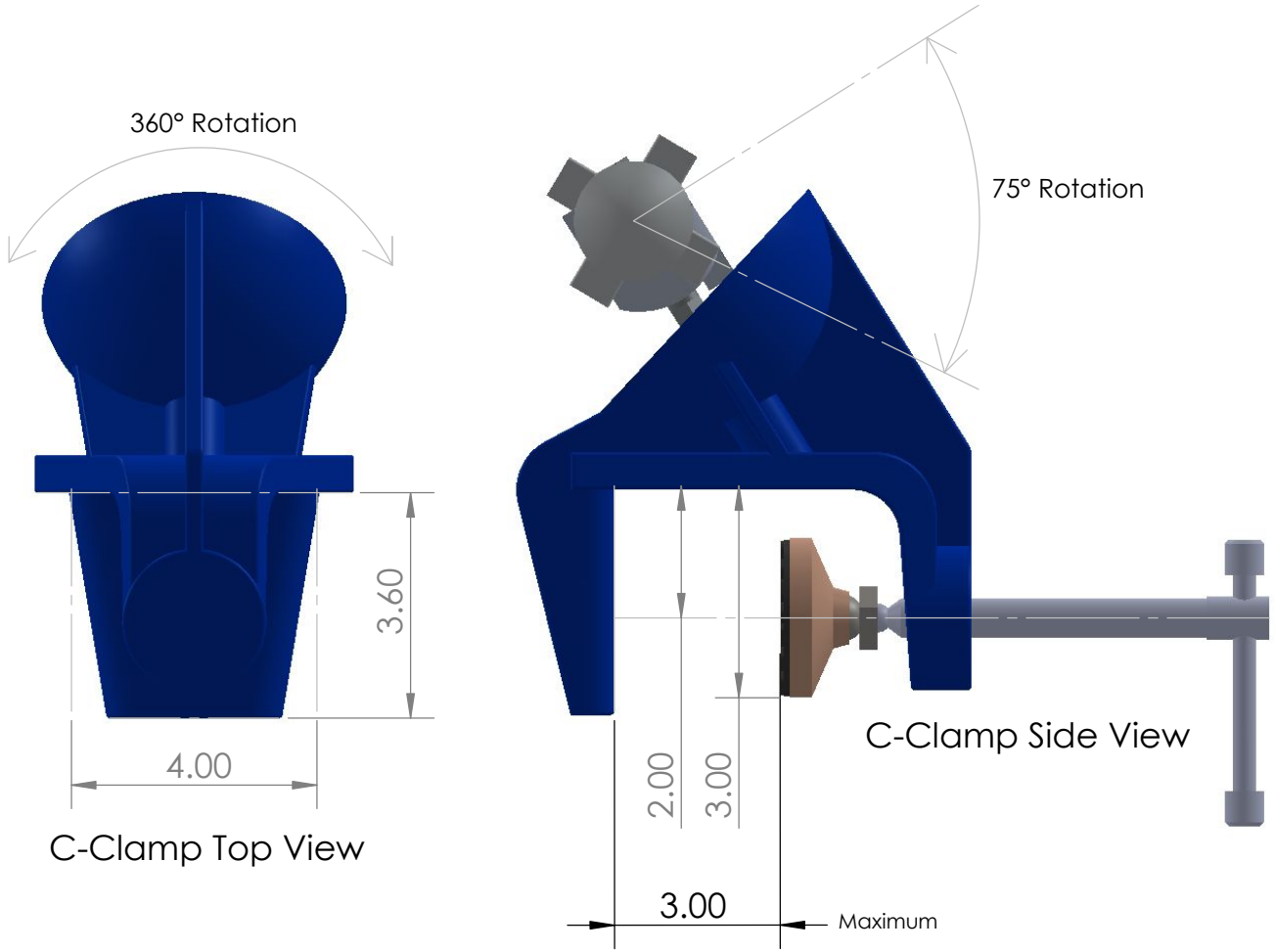
Stabilizer fins are not provided with all XTF-3 hydrofoils. Stabilizer fins are typically added to impellers when needed to help balance longer shafts or add weight to the impeller if the RPM is close to first critical frequency.



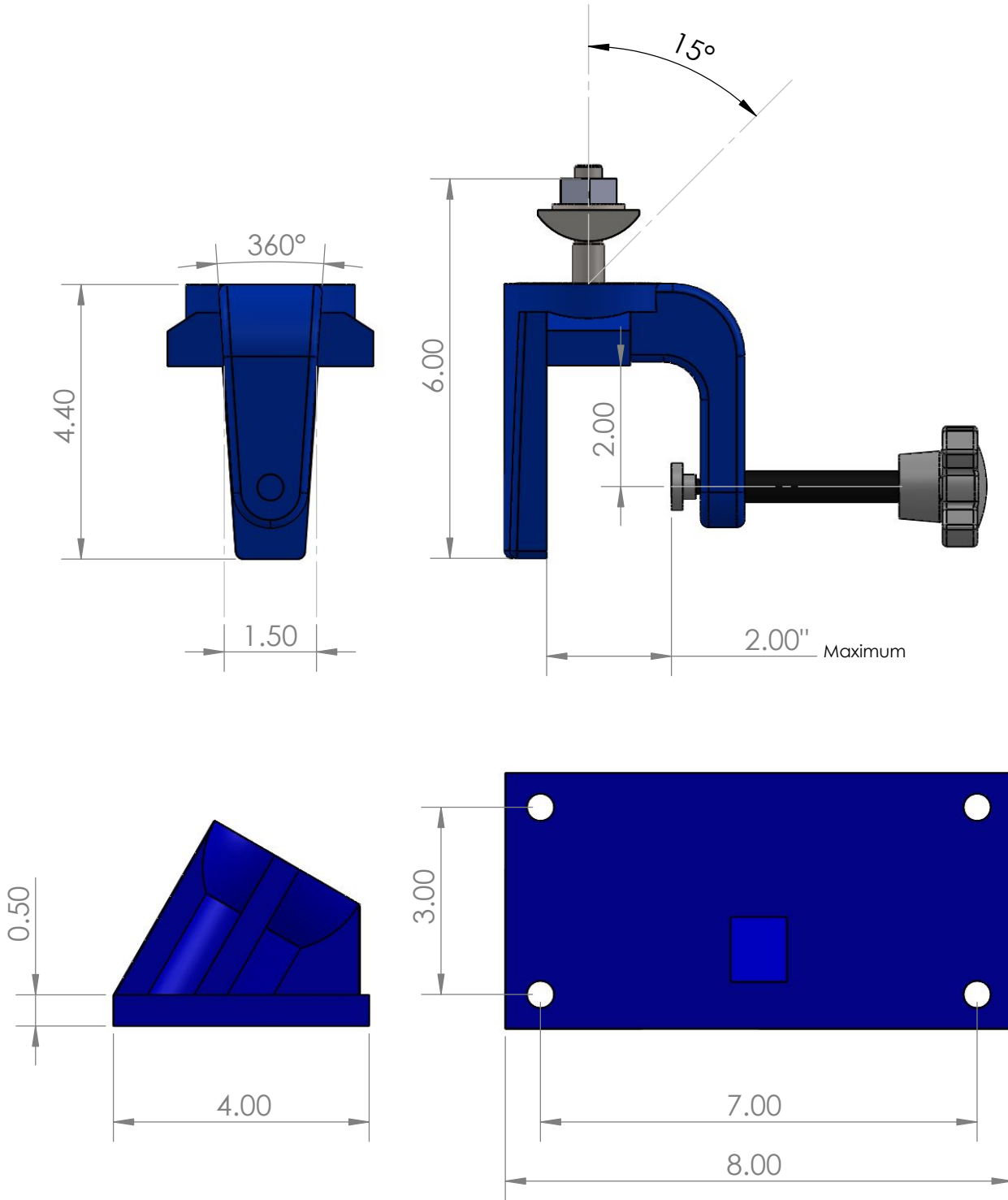
Cleveland Mixer
A Brand of Subiaco, Inc.

4 Heritage Park Rd. Tel. 860 669 1199
Clinton, CT 06413 Tel. 800 243 1188 www.clevelandmixer.com
USA Fax 860 669 7461

RG/RH C-Clamp & Cup Plate Mount



CD/CG C-Clamp & Cup Plate Mount

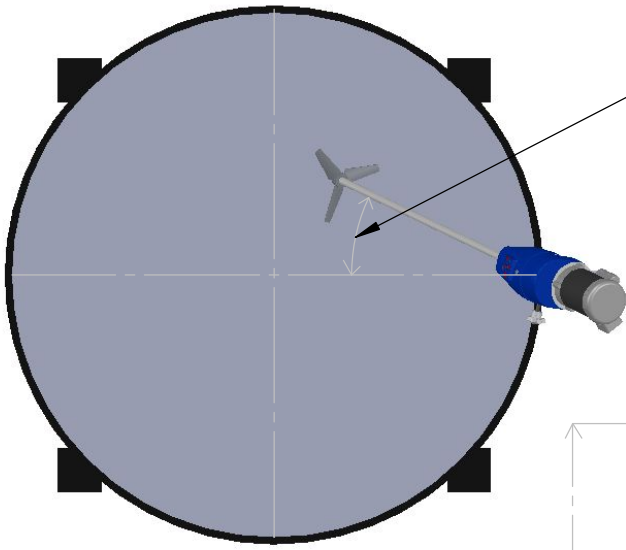


Cleveland Mixer
A Brand of Subiaco, Inc.

4 Heritage Park Rd. Tel. 860 669 1199
Clinton, CT 06413 Tel. 800 243 1188 www.clevelandmixer.com
USA Fax 860 669 7461

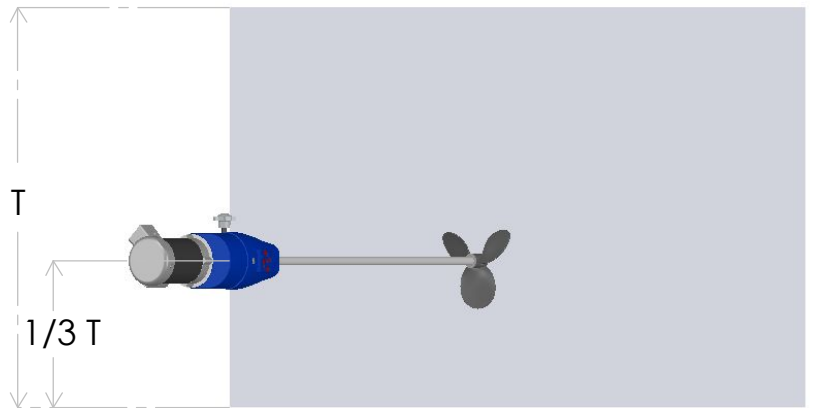
MOUNTING ORIENTATION

The figures below show the suggested mounting orientation for C-Clamp or Cup Plate mounted mixers. The orientations shown will help your mixer to achieve the best possible results while mixing the contents in your tank.

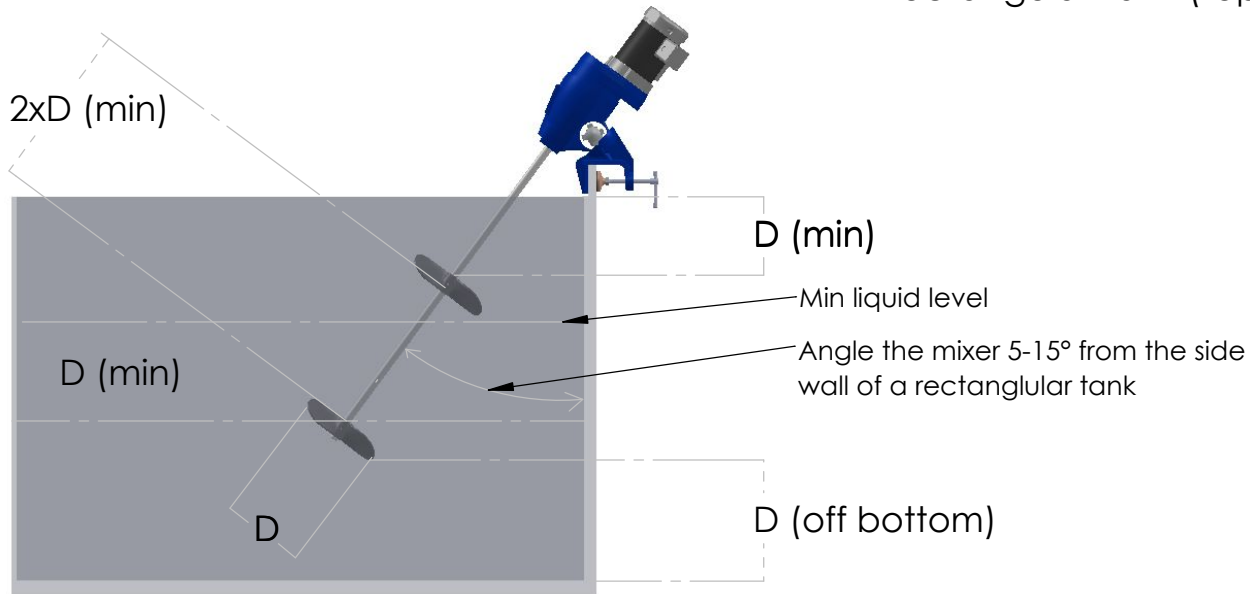


When mixing in a round tank, clamp or bolt the mixer on the center line and then rotate the swivel so that the shaft is 15-30° off-center towards the tank wall.

Cylindrical Tank



Rectangular Tank (top view)



Rectangular Tank (side view)



Cleveland Mixer
A Brand of Subiaco, Inc.

4 Heritage Park Rd. Tel. 860 669 1199
Clinton, CT 06413 Tel. 800 243 1188 www.clevelandmixer.com
USA Fax 860 669 7461

TROUBLE SHOOTING

If problems occur while your mixer is in operation, you should immediately cut off power to the mixer and use the info below to try and find the source of the problem. Continuing to run a mixer that is not operating properly can result in further damage or complete failure of your mixer. You can also contact Cleveland Mixer for assistance with trouble shooting 1-800-243-1188

TROUBLE SHOOTING

MIXER PART	PROBLEM	POSSIBLE CAUSES	REMEDY
MIXER SHAKING	Clamp Issue	Worn Vibration Pad / stripped bolt thread	Replace parts
REDUCER	Running Hot	Overloaded	Do not exceed the design capacity of the mixer. You can check the motor high load amps to see if it's overloaded. Settled solids, increased speed, increased volume/viscosity
	Running Hot	Lubrication Issue	CG / RG mixers have gear reducers w/ lubrication inside. Both are sealed and don't require regular maint. but oil or grease still might need to be added
	Running Hot	Ventilation Issue	The reducer's breather plug should be located above the oil fill line and should be open and clean from debris
	Running Noisy	Broken Internal Parts	Try to isolate the source fo the sound (reducer, motor, etc.) Check mount bolts are tight and not rattling,
	Running Hot	High Ambient	Parts like oil seals/bearings can degrade once they exceed 180°F Running the mixer in a location with a high ambient can contribute to heat damage
MOTOR	Running Hot	Overloaded	Do not exceed the design capacity of the mixer. You can check your mixer's assy drawing to view load limits. Settled solids, increased speed, increased volume/viscosity can cause overload
	Tripping Breaker	Overloaded	Do not exceed the design capacity of the mixer
		Not Wired Correctly	The motor should be wired by a qualified electrician
Running Noisy	Bad Bearing	Rebuild or Replace Motor	
SHAFT	Vibrating/Shaking	RPM Within 20% of First Critical	Engineered mixers are designed to run atleast 20% above/below 1st crit
		ImpellerRunning in Reverse	Standard impellers and propellers are designed to run clockwise
		Mounting Issue	Mixers require secure and 100% rigid mounting
	Wobbling	Bent Shaft	Excessive runnout or a wobbling shaft can be caused by a bend in the shaft. It's possible for shafts to get bent in shipping or if left in uneven storage
IMPELLER	Vibrating/Shaking	Loose Set Screws	Torque the blade mounting hardware to appropriate value. Make sure to use the lock washers provided and thread locking compound when possible
		Bent Blade	
		On Upside Down	Follow the impeller installation instructions from page 8
		Liquid Level	The operating liquid level should never be less than 2x the diameter of the impeller

Note - making unauthorized modifications to your mixer can result in voiding your mixer's warranty. Please consult with the factory before making mechanical modifications.



Cleveland Mixer
A Brand of Subiaco, Inc.

4 Heritage Park Rd. | Tel. 860 669 1199
Clinton, CT 06413 | Tel. 800 243 1188 www.clevelandmixer.com
USA | Fax 860 669 7461

CD EXPLODED VIEW / PARTS LIST

Complete mixer heads are supplied with all of the hardware and components that were supplied with your mixer less the motor, mixer shaft and impeller or propeller

CD MIXER HEAD
 P/N - CD-.75CC (3/4" bore w/ c-clamp)
 P/N - CD-.75FM (3/4" bore w/ cup plate)
 P/N - CD-1.0CC (1" bore w/ c-clamp)
 P/N - CD-1.0FM (1" bore w/ cup plate)



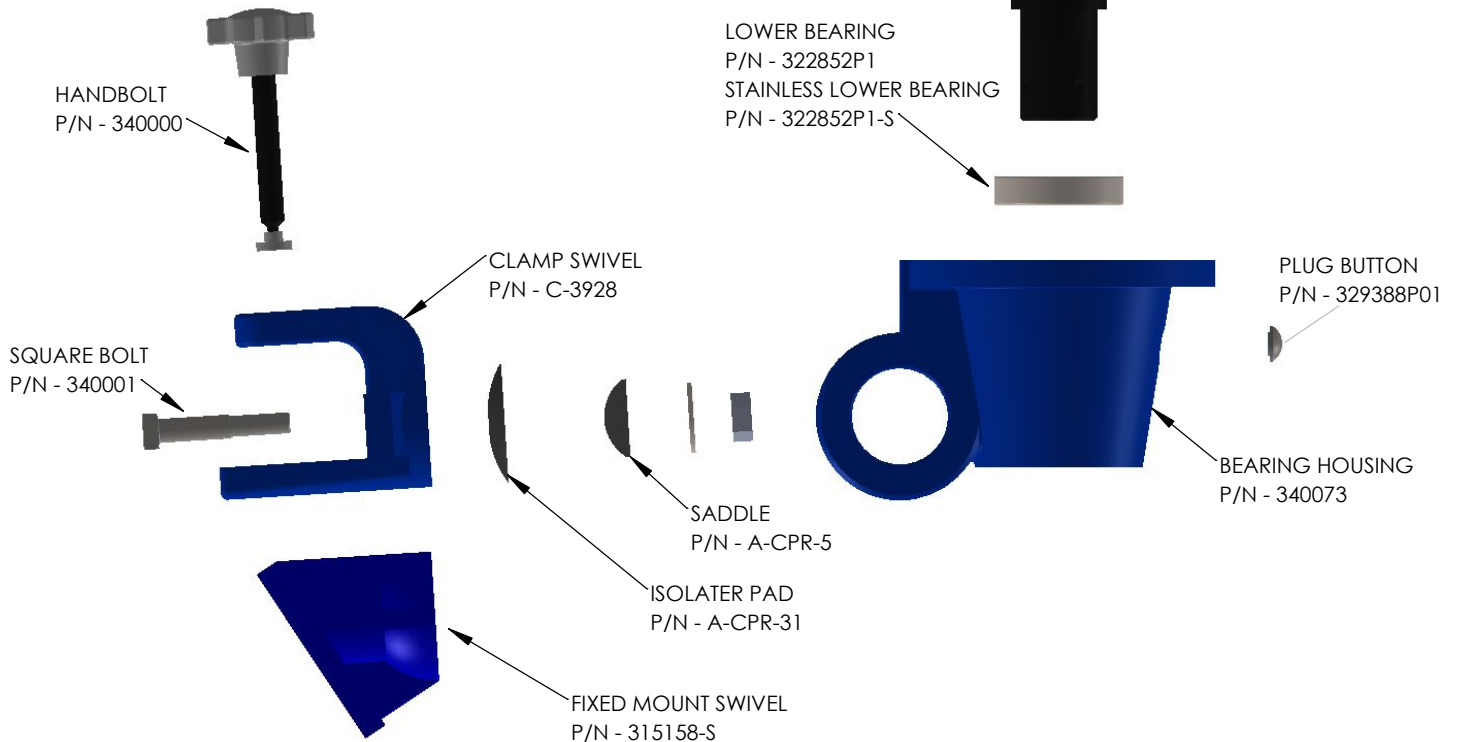
COMPLETE CLAMP ASSEMBLIES

COMPLETE C-CLAMP ASSEMBLY
 P/N - 18300

COMPLETE CUP PLATE MOUNT ASSEMBLY
 P/N - 18301

ARBOR

P/N - 322970P2 (.75" bore, steel)
 P/N - 322970P1 (1" bore, steel)
 P/N - 322971P1 (1.25" bore, steel)
 P/N - 322970P4 (.75" bore, 316ss)
 P/N - 322970P3 (1" bore, 316ss)



Some of the parts shown on this page are available in additional colors and materials of construction (such as: white epoxy coat, nickel coated, steel-it grey, uncoated aluminum & stainless steel) contact Cleveland Mixer with inquiries



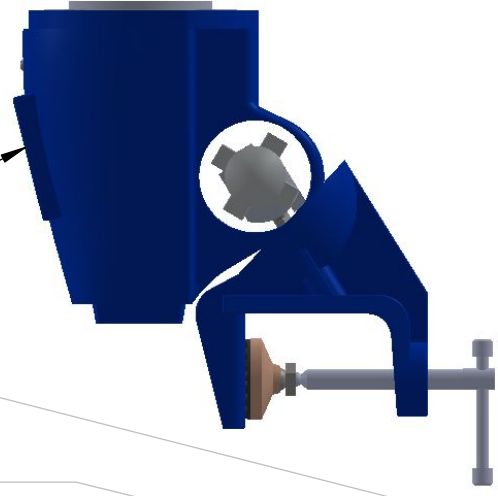
Cleveland Mixer
 A Brand of Subiaco, Inc.

4 Heritage Park Rd. Tel. 860 669 1199
 Clinton, CT 06413 Tel. 800 243 1188 www.clevelandmixer.com
 USA Fax 860 669 7461

RH EXPLODED VIEW / PARTS LIST

Complete mixer heads are supplied with all of the hardware and components that were supplied with your mixer less the motor, mixer shaft and impeller or propeller

- RH MIXER HEAD**
 P/N - RH-.75CC (3/4" bore w/ c-clamp)
 P/N - RH-.75FM (3/4" bore w/ cup plate)
 P/N - RH-1.0CC (1" bore w/ c-clamp)
 P/N - RH-1.0FM (1" bore w/ cup plate)
 P/N - RH-1.25CC (1.25" bore w/ c-clamp)
 P/N - RH-1.25FM (1.25" bore w/ cup plate)



- ARBOR**
 P/N - 322970P2 (.75" bore, steel)
 P/N - 322970P1 (1" bore, steel)
 P/N - 322971P1 (1.25" bore, steel)
 P/N - 322970P4 (.75" bore, 316ss)
 P/N - 322970P3 (1" bore, 316ss)

CLAMP ASSY'S

- COMPLETE C-CLAMP ASSEMBLY
 P/N - 18300
 COMPLETE CUP PLATE MOUNT ASSEMBLY
 P/N - 18301

- LOWER BEARING**
 P/N - 322852P1 (steel)
 P/N - 322852P1-SS (stainless)

- CAPTIVE PANEL SCREW**
 P/N - 330010

- HOUSING COVER**
 P/N - 311083 (blue)

- LOWER SEAL**
 P/N - 320216P12

- BEARING SUPPORT**
 P/N - 311090 (blue)

- CLAMP SWIVEL**
 P/N - 311417 (blue)
- SHAFT SEAL O-RING**
 P/N - 330006-3 (3/4" shaft)
 P/N - 330006-2 (1" shaft)
 P/N - 330006-3 (1.25" shaft)

- HAND BOLT**
 P/N - CL-10HK6T

- CLAMP WEDGE**
 P/N - A-16486

- CLAMP CENTER**
 P/N - A-16485

- VIBRATION PAD**
 P/N - 330420

- CUP PLATE SWIVEL**
 P/N - 315158 (blue)

- THUMB SCREW**
 P/N - 24573

- CLAMP FOOT**
 LM250-5-8-11ZPS

Some of the parts shown on this page are available in additional colors and materials of construction (such as: white epoxy coat, nickel coated, steel-it grey, uncoated aluminum & stainless steel) contact Cleveland Mixer with inquiries



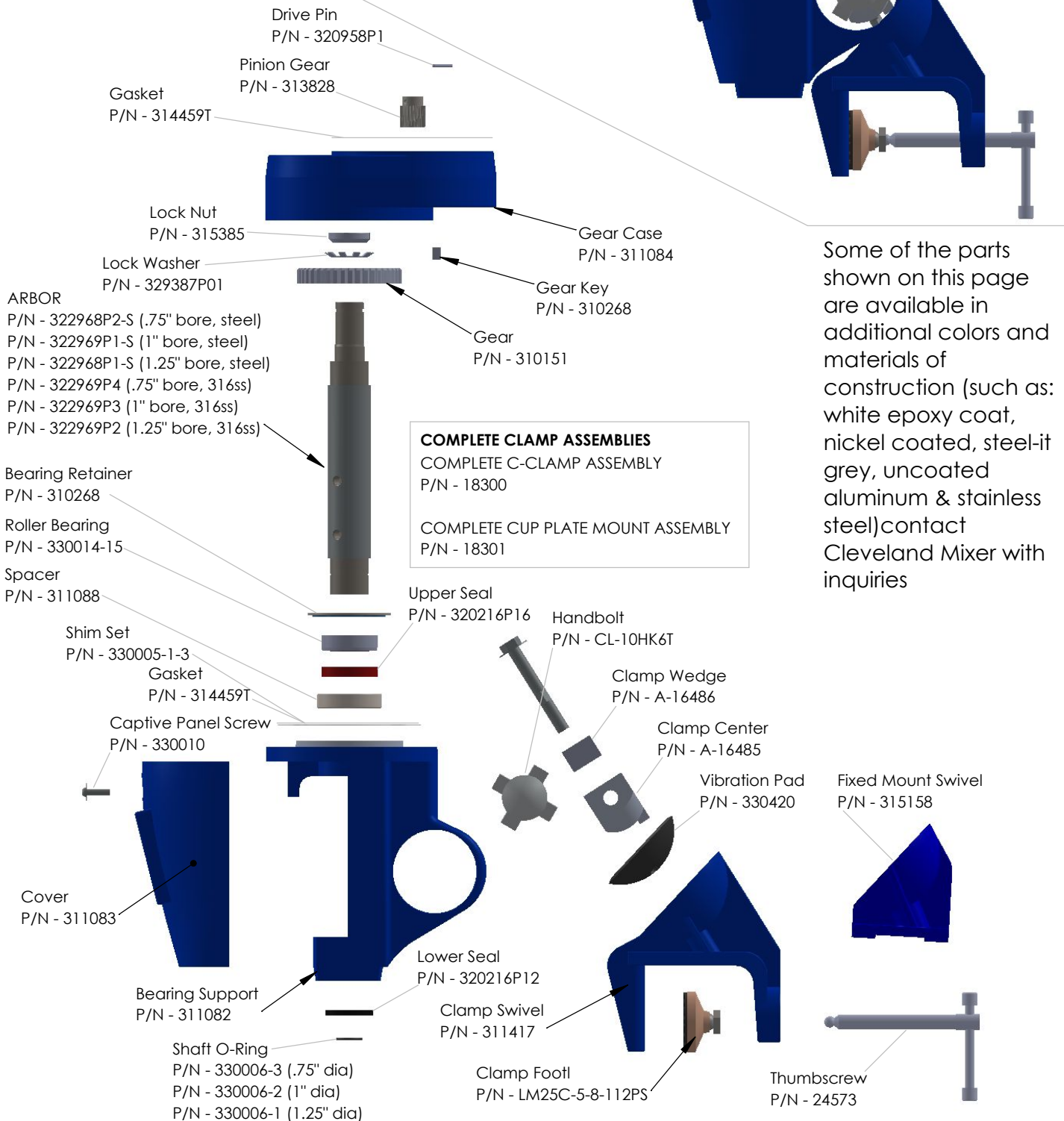
Cleveland Mixer
 A Brand of Subiaco, Inc.

4 Heritage Park Rd. Tel. 860 669 1199
 Clinton, CT 06413 Tel. 800 243 1188 www.clevelandmixer.com
 USA Fax 860 669 7461

RG MIXER EXPLODED VIEW / PARTS LIST

Complete mixer heads are supplied with all of the hardware and components that were supplied with your mixer less the motor, mixer shaft and impeller or propeller

RG MIXER HEAD
 P/N - RG-.75CC (3/4" bore w/ c-clamp)
 P/N - RG-.75FM (3/4" bore w/ cup plate)
 P/N - RG-1.0CC (1" bore w/ c-clamp)
 P/N - RG-1.0FM (1" bore w/ cup plate)
 P/N - RG-1.25CC (1" bore w/ c-clamp)
 P/N - RG-1.25FM (1" bore w/ cup plate)



COMPLETE CLAMP ASSEMBLIES
 COMPLETE C-CLAMP ASSEMBLY
 P/N - 18300
 COMPLETE CUP PLATE MOUNT ASSEMBLY
 P/N - 18301

Some of the parts shown on this page are available in additional colors and materials of construction (such as: white epoxy coat, nickel coated, steel-it grey, uncoated aluminum & stainless steel) contact Cleveland Mixer with inquiries



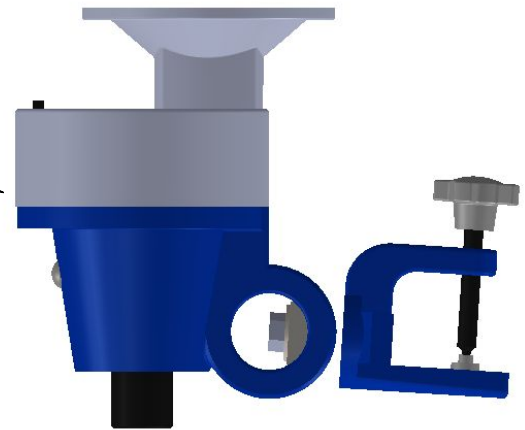
Cleveland Mixer
 A Brand of Subiaco, Inc.

4 Heritage Park Rd. Tel. 860 669 1199
 Clinton, CT 06413 Tel. 800 243 1188 www.clevelandmixer.com
 USA Fax 860 669 7461

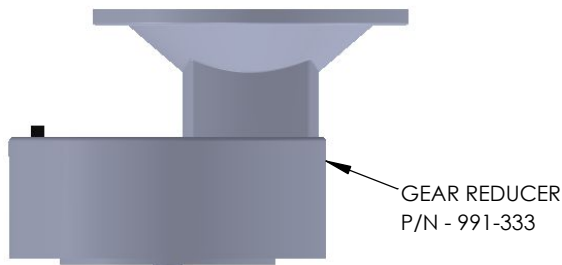
CG MIXER EXPLODED VIEW / PARTS LIST

Complete mixer heads are supplied with all of the hardware and components that were supplied with your mixer less the motor, mixer shaft and impeller or propeller

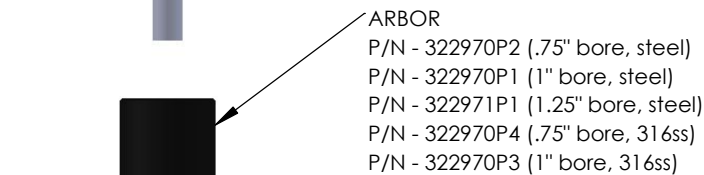
CG MIXER HEAD
 P/N - CG-.75CC (3/4" bore w/ c-clamp)
 P/N - CG-.75FM (3/4" bore w/ cup plate)
 P/N - CG-1.0CC (1" bore w/ c-clamp)
 P/N - CG-1.0FM (1" bore w/ cup plate)



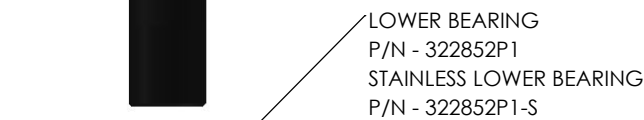
Some of the parts shown on this page are available in additional colors and materials of construction (such as: white epoxy coat, nickel coated, steel-it grey, uncoated aluminum & stainless steel) contact Cleveland Mixer with inquiries



GEAR REDUCER
 P/N - 991-333



ARBOR
 P/N - 322970P2 (.75" bore, steel)
 P/N - 322970P1 (1" bore, steel)
 P/N - 322971P1 (1.25" bore, steel)
 P/N - 322970P4 (.75" bore, 316ss)
 P/N - 322970P3 (1" bore, 316ss)



LOWER BEARING
 P/N - 322852P1
 STAINLESS LOWER BEARING
 P/N - 322852P1-S



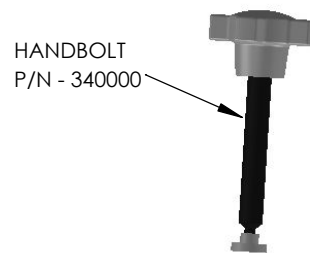
BEARING HOUSING
 P/N - 340073

PLUG BUTTON
 P/N - 329388P01



SADDLE
 P/N - A-CPR-5

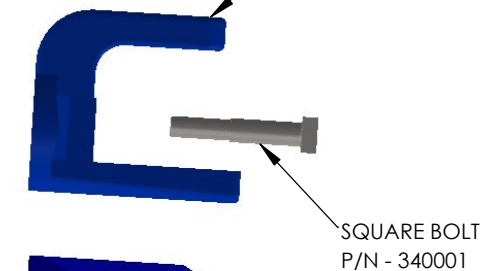
ISOLATER PAD
 P/N - A-CPR-31



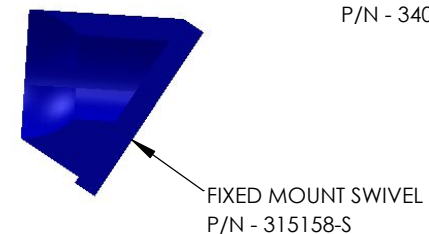
HANDBOLT
 P/N - 340000



CLAMP SWIVEL
 P/N - C-3928



SQUARE BOLT
 P/N - 340001



FIXED MOUNT SWIVEL
 P/N - 315158-S

COMPLETE CLAMP ASSEMBLIES

COMPLETE C-CLAMP ASSEMBLY
 P/N - 18300

COMPLETE CUP PLATE MOUNT ASSEMBLY
 P/N - 18301



Cleveland Mixer
 A Brand of Subiaco, Inc.

4 Heritage Park Rd. Tel. 860 669 1199
 Clinton, CT 06413 Tel. 800 243 1188 www.clevelandmixer.com
 USA Fax 860 669 7461



Cleveland Mixer
A Brand of Subiaco, Inc.

4 Heritage Park Rd.
Clinton, CT 06413
USA

Tel. 860 669 1199
Tel. 800 243 1188 www.clevelandmixer.com
Fax 860 669 7461